

2012
Plus Size
by Leg Avenue



Table of Contents

2910Q.....	40	86529Q.....	23	86545Q.....	5, 40
2911Q.....	41	86530Q.....	17	86546Q.....	33
2912Q.....	9, 41	86531Q.....	21	86547Q.....	32
2913Q.....	41	86532Q.....	10	86548Q.....	4
2914Q.....	42	86533Q.....	22	86549Q.....	9
2928Q.....	3, 4, 42	86534Q.....	8	8350Q.....	39
81359Q.....	13	86535Q.....	27	8670Q.....	38
81360Q.....	14	86536Q.....	11	8717Q.....	20
81361Q.....	16	86537Q.....	25	8718Q.....	19
8254Q.....	36	86538Q.....	18	8728Q.....	35
86002Q.....	35	86539Q.....	28	8775Q.....	37
86090Q.....	31	86540Q.....	12	8782Q.....	15
86329X.....	6	86541Q.....	29	88012Q.....	34
86335X.....	7	86542Q.....	24	8888Q.....	43
86367Q.....	26	86543Q.....	5	89041Q.....	39
86526Q.....	30	86544Q.....	3	A1704Q.....	6, 40

Terms & Conditions

1. Leg Avenue can only accept orders from authorized customers that have provided a valid resale number, business license, and other required documentation. To become an authorized customer, please contact our customer service department toll free at 1-888-4LEAVE (1-888-453-4283). The terms and conditions specified herein and on any invoices issued by Leg Avenue are exclusive and controlling. Any additional or conflicting terms or conditions contained in any order placed by any customer are void.

2. Leg Avenue's minimum order requirement is \$200 domestic and \$1,000 international. Unless Leg Avenue has extended credit terms, all orders must be paid in advance by cashier's check, money order, credit card, or wire transfer. Items with a non-closeout unit price of \$5.00 or less are packaged in groups of six pairs per color. For international orders, 20% must be paid at the time the order is placed and the remainder must be paid in full before the merchandise is shipped. Term accounts must be approved in advance by Leg Avenue and its factor, The CIT Group. To seek credit approval, please submit a completed Application for Credit, which you can obtain from Leg Avenue's customer service department. Allow three weeks to process your credit application. Unless otherwise specified, all term payments must be made on or before the due date specified on the invoice. Any amounts not paid when due shall be assessed a service charge at the rate of eighteen (18%) percent per annum (1.5% per month) or the highest rate allowed by law. A \$25.00 administrative fee will be charged for all returned checks, regardless of circumstances.

3. All invoices will include a 1% handling charge up to a \$15

maximum per order shipped, which will typically be included in either the freight or the shipping and handling line.

4. Orders will be made available for pick up at will call upon request. All will call orders are subject to an additional \$25 processing fee. Any order not picked up within 72 hours will be shipped via UPS ground at Customer's expense. If the shipment is refused or returned, Customer will be charged both the freight and a 15% restocking fee. During peak season Leg Avenue may reduce will call hours and it reserves the right to suspend will call at any time. Please call customer service to find out when you may pick up your order.

5. All returns are subject to the Leg Avenue Return Policy, which is incorporated herein by reference. Please contact customer service or visit Leg Avenue's website to obtain a copy of the Return Policy.

6. If any Merchandise is not in stock at the time an order is shipped, that portion of the order will be automatically cancelled unless otherwise requested. Customers seeking backorders must specify a cancellation date when placing their purchase order.

7. Leg Avenue goods are subject to territorial restrictions. Leg Avenue has exclusive distribution arrangements in many countries and its products may only be distributed in those countries by Leg Avenue's authorized distributors. A list of international distributors is available on the Leg Avenue website or by contacting the customer service department. Leg Avenue reserves the right to revoke discounts or refuse to sell to customers who violate these restrictions.

8. Leg Avenue grants its customers a limited license to use Leg Avenue's photographs and other promotional material

(hereinafter "Materials"), subject to the terms of the Image Release agreement, which is incorporated herein by reference. You may not use Leg Avenue's Materials for any purpose unless you agree to the terms of the Image Release and provide a signed copy of it to Leg Avenue. Use of Leg Avenue's Materials on auction websites, such as eBay.com, is strictly prohibited. Please contact customer service or visit Leg Avenue's website to obtain a copy of the Image Release.

9. Prices and specifications are subject to change without prior notice. Delivery dates are approximate and not guaranteed. Full risk of loss and title passes to Customer at the time merchandise leaves Leg Avenue's warehouse or Leg Avenue delivers the merchandise to a carrier, whichever is earlier. International customers are responsible for arranging for their own freight forwarder. If any shipment is returned as undelivered by the package carrier, Customer will be solely responsible for any reshipment costs, even if the original shipping was free.

10. This Agreement is governed by the laws of the State of California, without giving effect to its conflict-of-law provisions. Any dispute shall be under the exclusive jurisdiction of and venue in the state or federal courts located in Los Angeles County, California. The terms of the United Nations Convention on Contracts for the International Sale of Goods are inapplicable. In no event shall Leg Avenue be liable for coincidental or consequential damages, regardless of whether such damages were foreseeable. In any action or proceeding to collect on unpaid invoices, the prevailing party shall be entitled to recover its reasonable costs, including attorneys' fees.

Return Policy

Leg Avenue stands behind the quality of every item it sells. It will accept returns for items that were delivered damaged or that were not included in a customer's order at no charge, subject to the following conditions. Unless otherwise specified, all claims for discrepancies or damages must be made within thirty (30) days after the item shipped. Claims on all sequined or beaded garments must be made within 5 business days of the invoice date. Claims on all Halloween items shipped after July 1st must be made by Leg Avenue's close of business on the second Friday of November that year. Closeout items are not subject to return because they are purchased "as is" at a significant discount. Leg Avenue does not guarantee sales and will not accept returns that are not

a result of either discrepancies or damage incurred during manufacturing or shipping. No claims will be accepted on used goods or on goods damaged after their receipt by the customer.

All returns must be authorized in advance. To obtain authorization, contact customer service at (888) 453-4283. Leg Avenue's sales representatives are not authorized to approve returns. Goods returned without authorization will be shipped back at the customer's expense and will not be credited. Upon authorizing a return, Leg Avenue's customer service department will send a Return Authorization Label to ship the goods at Leg Avenue's expense. Upon receipt and verification of the return, Leg Avenue will credit the

value of the return towards future orders. All items returned to Leg Avenue must arrive in original condition, in their original packaging, with no pricing stickers, holes, or other alterations, or the return will be rejected. Merchandise approved for returns must be delivered to Leg Avenue within 30 days of approval or the return authorization will be voided. Authorized returns sent without the Return Authorization Label will be charged a 15% restocking fee and Leg Avenue will not reimburse shipping. Returns will be processed at the lowest price at which an item was ordered up to the number ordered at that price.

For international customers, special instructions may apply. Please ask customer service for assistance.



86544Q

Crystal Corset, features brocade silhouette with support boning and steel front busk closure, contrast velvet ribbon seam detail, venice lace bodice trim, and oversized satin bow accents. Color: Black/Burgundy. Size: 1X/2X, 3X/4X.

1X/2X



3X/4X



2928Q

Opaque mesh ruffle boy short with satin bow accent. Color: Black. Size: 1X, 2X.

1X



2X





86548Q

Sasha Corset, features brocade silhouette with support boning and steel front busk closure, pleated ruffle trim, and satin ribbon accent.

Color: Black. Size: 1X/2X, 3X/4X.



1X/2X



3X/4X



2928Q

Opaque mesh ruffle boy short with satin bow accent.

Color: Black. Size: 1X, 2X.



1X



2X





86543Q

Chloe Corset, features satin silhouette with support boning and side zipper, contrast color seam detail, and sequin embroidered lace accents.
Color: Red. Size: 1X/2X, 3X/4X.



1X/2X



3X/4X



86545Q

Satin burlesque skirt with train and oversized back bow.
Color: Black. Plus size.





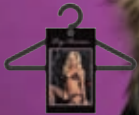
86329X

Raven Corset, features satin silhouette with support boning, floral lace overlay on contrast panels, side zipper, and bow accent.
Color: Black/Red. Size: 1X/2X.



A1704Q

Tulle bustle skirt with lace front and satin bow accent.
Color: Black. Size: 1X/2X, 3X/4X.

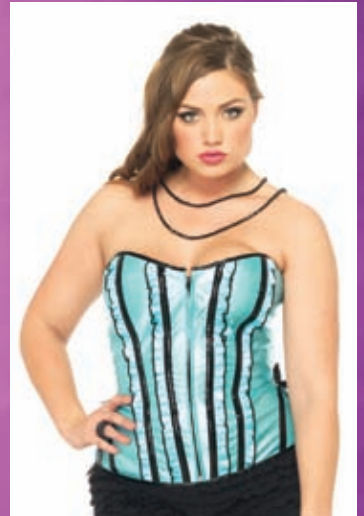


1X/2X



3X/4X





86335X

Betty Corset, features satin silhouette with support boning, vinyl seam accents, front zipper, and pleated ruffle detail. Color: Black/Fuchsia, Black/Red, Black/Blue. Size: 1X/2X.



Black/Fuchsia



Black/Red



Black/Blue





86534Q

2 PC. Jade Bustier Set, features satin silhouette with support boning, lace overlay and satin bow accents, attached garter straps, and includes matching g-string. Color: Black/Green. Size: 1X/2X, 3X/4X.



1X/2X



3X/4X





86549Q

Giselle Corset, features satin silhouette with support boning and side zipper, contrast color seam detail, embroidered lace applique accent, and removable garter straps.
Color: Black/Fuchsia. Size: 1X/2X, 3X/4X.



1X/2X

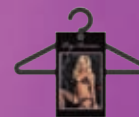


3X/4X



2912Q

Mesh ruffle tanga with satin bow accent.
Color: Black. Size: 1X, 2X.



1X



2X



86532Q

2 PC. Padded underwire lace cami garter with contrast satin ribbon detail and matching g-string.

Color: Black/Fuchsia.

Size: 1X/2X, 3X/4X.



1X/2X



3X/4X





86536Q

2 PC. Padded underwire mesh cami garter with lace cup detail, lace trim accents, and matching thong. Color: Black. Size: 1X/2X, 3X/4X.



1X/2X



3X/4X



86540Q

2 PC. Faux rhinestone trimmed tie front lace babydoll with underwire satin cups and matching g-string. Color: Black. Size: 1X/2X, 3X/4X.



1X/2X



3X/4X



81359Q

2 PC. Tie front ruffle trimmed mesh babydoll with rhinestone strap accent and matching panty.

Color: Black. Size: 1X/2X, 3X/4X.



1X/2X



3X/4X



81360Q

2 PC. Lace trimmed brushed spandex babydoll with padded cups and matching panty.
Color: Leopard. Size: 1X/2X, 3X/4X.



1X/2X



3X/4X





8782Q

2 PC. Romantic lace babydoll and matching g-string.
Color: Red, Black. Plus size.



Red



Black





81361Q

2 PC. Mesh chemise with lace padded cups and matching panty.
Color: Black/Purple. Size: 1X/2X, 3X/4X.



1X/2X



3X/4X





86530Q

2 PC. Padded underwire flutter chemise with sequin lace bodice detail and matching g-string.

Color: Black/Red. Size: 1X/2X, 3X/4X.



1X/2X



3X/4X



86538Q

2 PC. Lace trimmed dotted mesh
chemise with floral lace center panel
and matching thong.
Color: Black/Red. Size: 1X/2X, 3X/4X.



1X/2X



3X/4X





8718Q

2 PC. Rose lace halter chemise and
matching g-string.
Color: Black. Plus size.





8717Q

2 PC. Rose lace flared chemise and matching g-string.
Color: Red, Black. Plus size.



Red



Black





86531Q

2 PC. Lace trimmed dotted mesh chemise with satin bow accents and matching thong.
Color: Black/Red. Size: 1X/2X, 3X/4X.



1X/2X



3X/4X



86533Q

2 PC. Spandex and lace underwire chemise with satin bow accents and matching panty.

Color: Red. Size: 1X/2X, 3X/4X.



1X/2X



3X/4X





86529Q

2 PC. Spandex and mesh padded underwire chemise with contrast stitching detail and matching panty. Color: Black. Size: 1X/2X, 3X/4X.



1X/2X



3X/4X



86542Q

2 PC. Ruffle trimmed satin and mesh
chemise with lace padded cups
and matching g-string.
Color: Black/Green. Size: 1X/2X, 3X/4X.



1X/2X



3X/4X



86537Q

2 PC. Padded underwire mesh chemise with sequin lace cups and matching g-string. Color: Black/Purple. Size: 1X/2X, 3X/4X.



1X/2X



3X/4X



86367Q

2 PC. Spandex chemise and g-string set, features floral eyelash lace accents and faux rhinestone straps. Color: Black. Size: 1X/2X, 3X/4X.



1X/2X



3X/4X



86535Q

Ruffle trimmed mesh chemise with sequin padded cup and matching g-string.
Color: Black. Size: 1X/2X, 3X/4X.



1X/2X



3X/4X



86539Q

Padded underwire stretch lace chemise with sequin venice lace trim and contrast lace ribbon seam accents.

Color: Black/Red. Size: 1X/2X, 3X/4X.



1X/2X



3X/4X





86541Q

Spandex strappy elastic band dress with mesh panel detail.
Color: Black. Size: 1X/2X, 3X/4X.



1X/2X



3X/4X





86526Q

Leopard lace halter dress.
Color: Black. Plus size.





86090Q

Seamless opaque mini dress with diamond net panels and cut out back.
Color: Black. Plus size.





86547Q

Floral lace mini dress with shredded strap detail and net accent.
Color: Black. Plus size.





86546Q

Long sleeved floral lace mini dress
with lace up net detail.
Color: Black. Plus size.





88012Q

Crocheted lace long dress with deep-V and sheer draped skirt.
Color: Black. Plus size.





86002Q

2 PC. High slit butterfly lace long gown with matching g-string. Color: Black. Plus size.



8728Q

Seamless fishnet bodystocking with criss cross strap back. Color: Black. Plus size.





8254Q

2 PC. Mini daisy lace bodystocking with matching fingerless gloves.
Color: Black. Plus size.





8775Q

Romantic lace criss cross strap bodystocking.
Color: Black. Plus size.





8670Q

Seamless spaghetti strap fishnet bodystocking.
Color: Black, White, Red.
Plus size.



Black



White



Red





89041Q

Halter fishnet bodystocking with lace trimmed deep-V and rhinestone criss cross accent.
Color: Black. Plus size.



8350Q

Seamless halter peek-a-boo fishnet bodystocking.
Color: Black. Plus size.



86545Q



A1704Q



2910Q



2910Q



86545Q

Satin burlesque skirt with train and oversized back bow.
Color: Black. Plus size.



A1704Q

Tulle bustle skirt with lace front and satin bow accent.
Color: Black. Size: 1X/2X, 3X/4X.



1X/2X



3X/4X



2910Q

Sequin butterfly lace tanga.
Color: Black. Size: 1X, 2X.



1X



2X





2913Q



2911Q



2913Q



2911Q

2913Q
 Stretch lace tanga with peek-a-boo sheer back.
 Color: Black. Size: 1X, 2X.



1X



2X



2911Q
 Stretch lace crotchless lace up tanga thong.
 Color: Black. Size: 1X, 2X.



1X



2X



2912Q
 Mesh ruffle tanga with satin bow accent.
 Color: Black. Size: 1X, 2X.



1X



2X



2912Q



2912Q

2928Q



2928Q



2914Q



2914Q



2928Q

Opaque mesh ruffle boy short with satin bow accent.
Color: Black. Size: 1X, 2X.



1X



2X



2914Q

Stretch lace tanga with satin bow accent.
Color: Pink. Size: 1X, 2X.



1X



2X



8888Q



8888Q



8888Q



8888Q



8888Q

2 PC. Lace garter belt set with matching thong (6 pc. per pack). Color: Black, White, Pink, Red. Plus size.



Black



White



Pink



Red



